

TUBOS LED

Tubos LED | LED tubes | Tubi LED



BLOG

Tubo fluorescente: parte positiva y negativa de quitar o no quitar la reactancia

Tubo fluorescente: vantagens e desvantagens de remover ou não o reator

Fluorescent tube: pros and cons of removing or not removing the ballast

Tubo fluorescente: vantaggi e svantaggi di rimuovere o non rimuovere il reattore

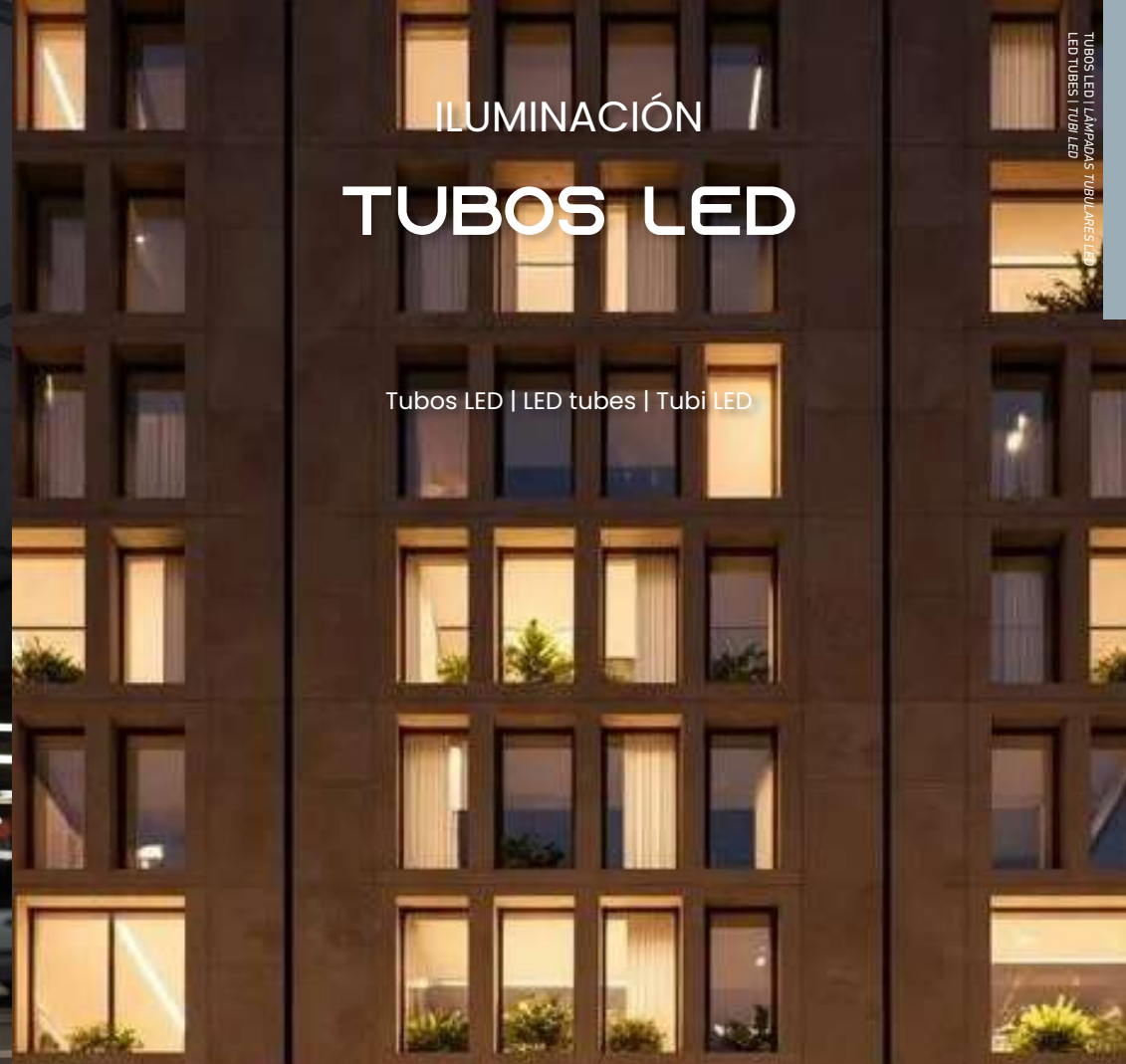


Escanea para ver nuestro BLOG

ILUMINACIÓN

TUBOS LED

Tubos LED | LED tubes | Tubi LED



TUBOS LED | LAMPADAS TUBULARES LED

LED TUBES | TUBI LED



MODEL	GAMA	W	Lm W			BASE							EE LABEL		
ECO T8		9 14 18 22	110			G13	IP20	-	CRI80	200-240V AC	-	V-Mat	L: 1198 mm L: 1500 mm L: 598 mm L: 900 mm Ø: 26 mm		PG 548
LP T8		9 18 22	110			G13	IP20	-	CRI80	200-240V AC	-	V-Mat	L: 1198 mm L: 1500 mm L: 598 mm Ø: 26 mm		PG 549
Linear T8		9 18 20 22	110			G13	IP20	-	CRI80	200-240V AC	PC-Op	-	L: 1198 mm L: 1498 mm L: 588 mm Ø: 26 mm		PG 550
T8 Film		9 14 15 18 22	110			G13	IP20	-	CRI80	220-240V AC	-	V-Mat	L: 1198 mm L: 1500 mm L: 588 mm L: 598 mm L: 900 mm Ø: 26 mm		PG 551
TUBO RADAR		9 18 23	139			G13	IP20	-	CRI80	100-240V AC	PC-Op	-	L: 1200 mm L: 1500 mm L: 600 mm Ø: 26 mm		PG 552
HL T8		8 14 18 20	167			G13	IP20	-	CRI80	220-240V AC	-	V-Mat	L: 1198 mm L: 1500 mm L: 598 mm Ø: 26 mm		PG 553
PRO T8		10 18 22	170			G13	IP20	-	CRI80	100-240V AC	PC-Op	-	L: 1198 mm L: 1500 mm L: 598 mm Ø: 26 mm		PG 554
TUBO BAKE		9 18 20	80			G13	IP20	-	CRI80	90-260V AC	PC-Op	-	L: 1198 mm L: 1498 mm L: 588 mm Ø: 26 mm		PG 555
TUBO FRUITVEG		9 18 20	100			G13	IP20	-	CRI80	90-260V AC	PC-Op	-	L: 1198 mm L: 1498 mm L: 588 mm Ø: 26 mm		PG 556
TUBO MEAT		9 18 20	80			G13	IP20	-	CRI80	90-260V AC	PC-Op	-	L: 1198 mm L: 1498 mm L: 588 mm Ø: 26 mm		PG 557
LINESLED		5 8 16	63			S14d S14s	IP20		CRI80	220-240V AC	PC-Op	-	L: 1000 mm L: 300 mm L: 500 mm Ø: 30 mm		PG 558
SOFILED		4 7	70			S15 S15s S19	IP20		CRI80	220-240V AC	PC-Op	-	L: 221 mm L: 284 mm L: 310 mm Ø: 21 mm Ø: 26 mm Ø: 38 mm		PG 559
T9 CIRCULAR		11 20	110			G10Q	IP20	-	CRI80	220-240V AC	PC-Op	-	H: 30 mm Ø: 205 mm Ø: 240 mm Ø: 298 mm		PG 560



ECO T8



ECO T8 IP20 CRI80

REF	W	Lm	BASE	⚡	⏏
1 ECOT809330C	9	990	G13	200-240V AC	330°
1 ECOT809330F	9	990	G13	200-240V AC	330°
1 ECOT809330B	9	990	G13	200-240V AC	330°
2 ECOT814330F	14	1450	G13	200-240V AC	330°
2 ECOT814330B	14	1540	G13	200-240V AC	330°
3 ECOT818330C	18	1780	G13	200-240V AC	330°
3 ECOT818330F	18	1980	G13	200-240V AC	330°
3 ECOT818330B	18	1980	G13	200-240V AC	330°
4 ECOT822330C	22	2180	G13	200-240V AC	330°
4 ECOT822330F	22	2420	G13	200-240V AC	330°
4 ECOT822330B	22	2420	G13	200-240V AC	330°

40000hh >100000h 50/60Hz

Dimensiones | Dimensões | Dimensions | Dimenzioni

REF	L	Ø	h
1	598 mm	Ø: 26 mm	25
2	900 mm	Ø: 26 mm	25
3	1198 mm	Ø: 26 mm	25
4	1500 mm	Ø: 26 mm	25



LP T8



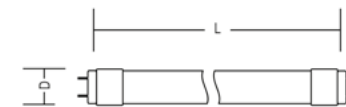
LP T8 IP20 CRI80

REF	W	Lm	BASE	⚡	⏏
1 LPT860F	9	990	G13	200-240V AC	330°
1 LPT860B	9	990	G13	200-240V AC	330°
2 LPT8120F	18	1980	G13	200-240V AC	330°
2 LPT8120B	18	1980	G13	200-240V AC	330°
3 LPT8150F	22	2420	G13	200-240V AC	330°
3 LPT8150B	22	2420	G13	200-240V AC	330°

40000hh >100000h 50/60Hz

Dimensiones | Dimensões | Dimensions | Dimenzioni

REF	L	Ø	h
1	598 mm	Ø: 26 mm	25
2	1198 mm	Ø: 26 mm	25
3	1500 mm	Ø: 26 mm	25





TUBO RADAR



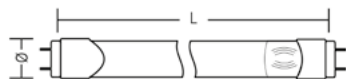
TUBO RADAR IP20 CRI80

REF	W	Lm	Color	BASE	Voltage	Beam Angle
1 RT809F	9	1000	4000K	G13	100-240V AC	180°
1 RT809B	9	1250	6500K	G13	100-240V AC	180°
2 RT818F	18	1900	4000K	G13	100-240V AC	180°
2 RT818B	18	2250	6500K	G13	100-240V AC	180°
3 RT820F	23	2760	4000K	G13	100-240V AC	180°
3 RT820B	23	2875	6500K	G13	100-240V AC	180°

45000hh 200000h 50/60Hz

Dimensiones | Dimensões | Dimensions | Dimensioni

REF	L	Ø	W
1	600 mm	26 mm	25
2	1200 mm	26 mm	25
3	1500 mm	26 mm	25



Especificaciones Sensor | Especificações do Sensor | Sensor Specifications | Specifiche del Sensore

Tecnología de Sensor Tecnologia do Sensor Sensor Technology Tecnologia del Sensore	MW
Área de detección Área de Detecção Detection Area Area di Rilevamento	<10m
Altura max Instalación Sensor Altura Máxima de Instalação do Sensor Max Height Installation Sensor Altezza Massima di Installazione del Sensore	2.5-4m
Modo Stanby Standby Mode Modalità Standby	15% light
Tiempo de encendido Tempo de Acendimento On/off time length Tempo di Accensione	1min



HLT8



HLT8 IP20 CRI80

REF	W	Lm	Color	BASE	Voltage	Beam Angle
1 HLT860F	8	1320	4000K	G13	220-240V AC	330°
1 HLT860B	8	1320	6500K	G13	220-240V AC	330°
2 HLT8120F	14	2000	4000K	G13	100-240V AC	330°
2 HLT8120B	14	2000	6500K	G13	100-240V AC	330°
3 HLT8150F	20	2800	4000K	G13	100-240V AC	330°
3 HLT8150B	18	3000	6500K	G13	220-240V AC	330°

40000hh >100000h 50/60Hz

Dimensiones | Dimensões | Dimensions | Dimensioni

REF	L	Ø	W
1	598 mm	26 mm	25
2	1198 mm	26 mm	25
3	1500 mm	26 mm	25





PRO T8



PRO T8 IP20 CRI80

REF	W	Lm	BASE	⚡	⚡
PROT8600F	10	1400	G13	100-240V AC	300°
PROT8600B	10	1700	G13	100-240V AC	300°
PROT81200F	18	2500	G13	100-240V AC	300°
PROT81200B	18	3060	G13	100-240V AC	300°
PROT81500F	22	3100	G13	100-240V AC	300°
PROT81500B	22	3740	G13	100-240V AC	300°

40000hh >100000h 50/60Hz

Dimensiones | Dimensões | Dimensions | Dimensiuni

REF	L	Ø	mm
1	598	26	30
2	1198	26	30
3	1500	26	30



TUBO BAKE



TUBOS LED | LAMPADAS TUBULARES LED
LED TUBES | TUBI LED



TUBO BAKE IP20 CRI80

REF	W	Lm	BASE	⚡	⚡
BAKE600	9	720	G13	90-260V AC	330°
BAKE1200	18	1440	G13	90-260V AC	330°
BAKE1500	20	1600	G13	90-260V AC	330°

40000hh >100000h 50/60Hz

Dimensiones | Dimensões | Dimensions | Dimensiuni

REF	L	Ø	mm
1	588	26	30
2	1198	26	30
3	1498	26	30





TUBO FRUITVEG



TUBO FRUITVEG

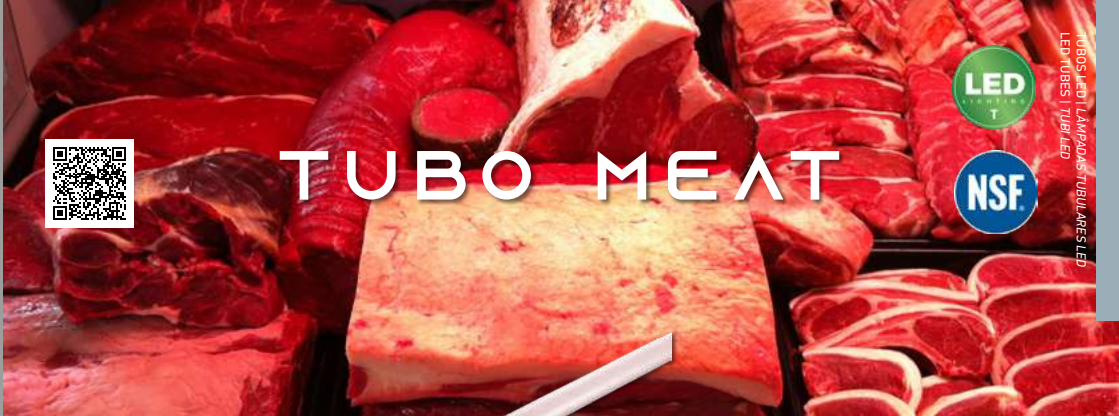
REF	W	Lm	BASE	⚡	⚙️
1 FRUITVEG600	9	900	G13	90-260V AC	330°
2 FRUITVEG1200	18	1800	G13	90-260V AC	330°
3 FRUITVEG1500	20	2000	G13	90-260V AC	330°

Dimensiones | Dimensões | Dimensions | Dimenzioni

REF	L	Ø	mm
1	588	26	30
2	1198	26	30
3	1498	26	30



TUBO MEAT

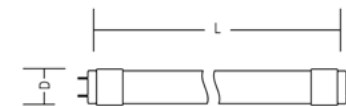


TUBO MEAT

REF	W	Lm	BASE	⚡	⚙️
1 MEAT600	9	720	G13	90-260V AC	330°
2 MEAT1200	18	1440	G13	90-260V AC	330°
3 MEAT1500	20	1600	G13	90-260V AC	330°

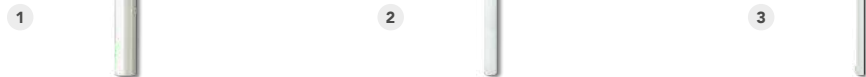
Dimensiones | Dimensões | Dimensions | Dimenzioni

REF	L	Ø	mm
1	588	26	30
2	1198	26	30
3	1498	26	30





LINELED



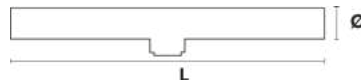
LINELED IP20 CRI80

REF	W	Lm	BASE	220-240V AC	270°
1 LINESL300S14D5C	5	300	S14d	2700K	270°
1 LINESL300S14S5C	5	300	S14s	2700K	270°
2 LINESL500S14D8C	8	500	S14d	2700K	270°
2 LINESL500S14S8C	8	500	S14s	2700K	270°
3 LINESL1000S14S16C	16	1000	S14s	2700K	270°

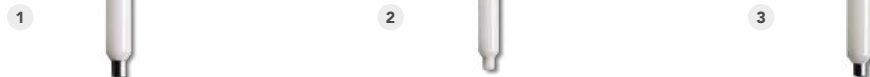
25000hh 100000h 50/60Hz

Dimensiones | Dimensões | Dimensions | Dimenzioni

REF	L	Ø	25/50
1	L: 300 mm	Ø: 30 mm	25/50
2	L: 500 mm	Ø: 30 mm	25/50
3	L: 1000 mm	Ø: 30 mm	25/50



SOFILED



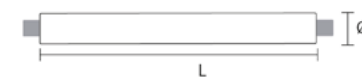
SOFILED IP20 CRI80

REF	W	Lm	BASE	220-240V AC	360°
1 SOFIL220S157C	4	280	S15	2700K	360°
2 SOFIL280S15P7C	7	480	S15s	2700K	360°
2 SOFIL280S157C	7	480	S15	2700K	360°
3 SOFIL310S197C	7	480	S19	2700K	360°

25000hh 100000h 50/60Hz

Dimensiones | Dimensões | Dimensions | Dimenzioni

REF	L	Ø	25/50
1	L: 221 mm	Ø: 21 mm	25/50
2	L: 284 mm	Ø: 26 mm	25/50
3	L: 310 mm	Ø: 38 mm	25/50





T9 CIRCULAR



STARTER LED

STARTLED



Cebador para tubos LED | Starter para tubos de LED | LED Tube Starter Fuse | Starter per tubi LED

T9 CIRCULAR

	REF		W	Lm		BASE		
1	CT91931F	PC-Op	11	1100	4000K	G10Q	220-240V AC	120°
1	CT91924B	PC-Op	11	1100	6500K	G10Q	220-240V AC	120°
3	CT91955F	PC-Op	20	2000	4000K	G10Q	220-240V AC	120°
4	CT98925TW	PC-Op	20	1980 (3000k) 2250 (6500k)	3000K / 4000K / 6500K	G10Q	220-240V AC	120°

30000hh 15000h 50/60Hz

Dimensiones | Dimensões | Dimensions | Dimensjoni

	H: 30 mm	Ø: 205 mm	20
1	H: 30 mm	Ø: 205 mm	20
2	H: 30 mm	Ø: 240 mm	20
3	H: 30 mm	Ø: 298 mm	20
4	H: 30 mm	Ø: 240 mm	20

